

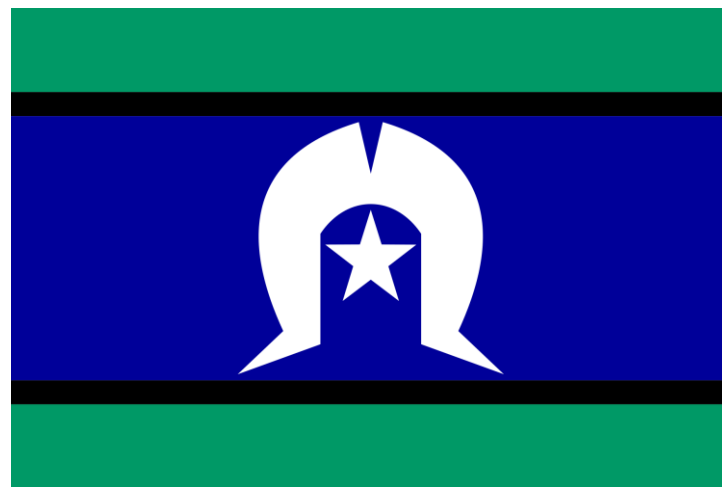
Promoting equality, preventing violence: creating safe cultures for women

Scott Holmes (Rev)

Chaplain, Brotherhood of St Laurence

Primary Prevention Practitioner

Introduction



1800RESPECT

NATIONAL SEXUAL ASSAULT, DOMESTIC
FAMILY VIOLENCE **COUNSELLING** SERVICE

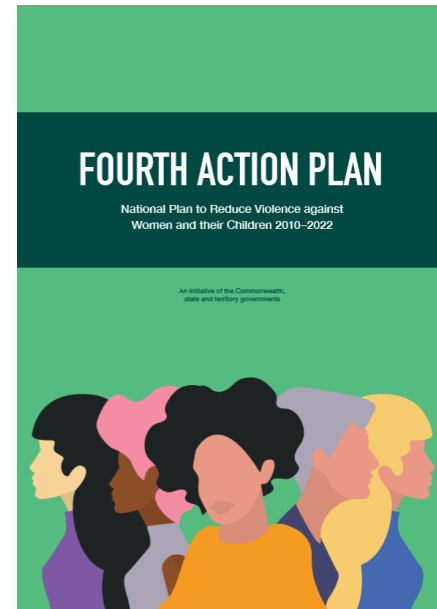
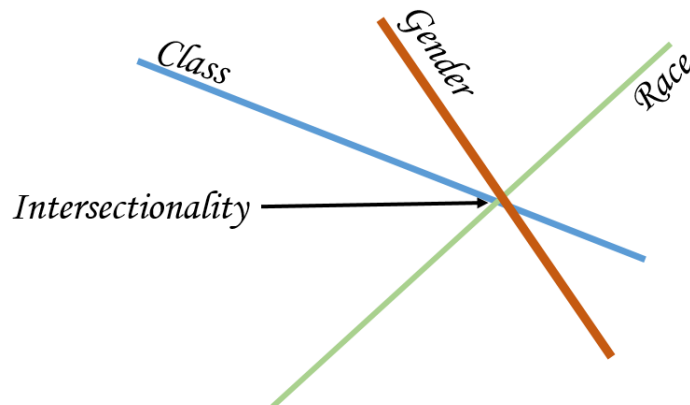
Call 1800 737 732

Setting the scene

**'Submit to your husbands':
Women told to endure
domestic violence in the
name of God**

By [Julia Baird](#) with [Hayley Gleeson](#)
Illustrations by Rocco Fazzari

Updated 22 Oct 2018, 8:24am



What does safety look like?



Exercise

What actions and/or attitudes can churches implement to create safety for women when.....

They are currently experiencing gender-based violence?	They or others in the church believe they are at risk of gender-based violence	Women are going about their regular lives without expectations of gender-based violence
<p data-bbox="206 488 699 539">Eg The church has a well-publicised policy advocating zero tolerance for violence</p> <p data-bbox="222 979 473 1039">Response</p>	<p data-bbox="722 488 1215 539">Eg The church leader communicates that all concerns about violence will be taken seriously</p> <p data-bbox="726 979 1199 1039">Early Intervention</p>	<p data-bbox="1238 488 1713 539">Eg There are regular sermons addressing issues of how gender impacts behaviour</p> <p data-bbox="1309 979 1591 1039">Prevention</p>

The role of gender inequality

Violence against women
is serious, prevalent and driven by
GENDER INEQUALITY

GENDERED DRIVERS
of violence against women:

CONDONING
of violence
against women

MEN'S CONTROL
of decision-
making and limits
to women's
independence

STEREOTYPED
constructions of
masculinity and
femininity

DISRESPECT
towards women and
male peer relations
that emphasise
aggression

Gender inequality sets the **NECESSARY SOCIAL CONTEXT**

Violence against women
IS PREVENTABLE
if we all work together



ACTIONS

that will prevent violence against women:

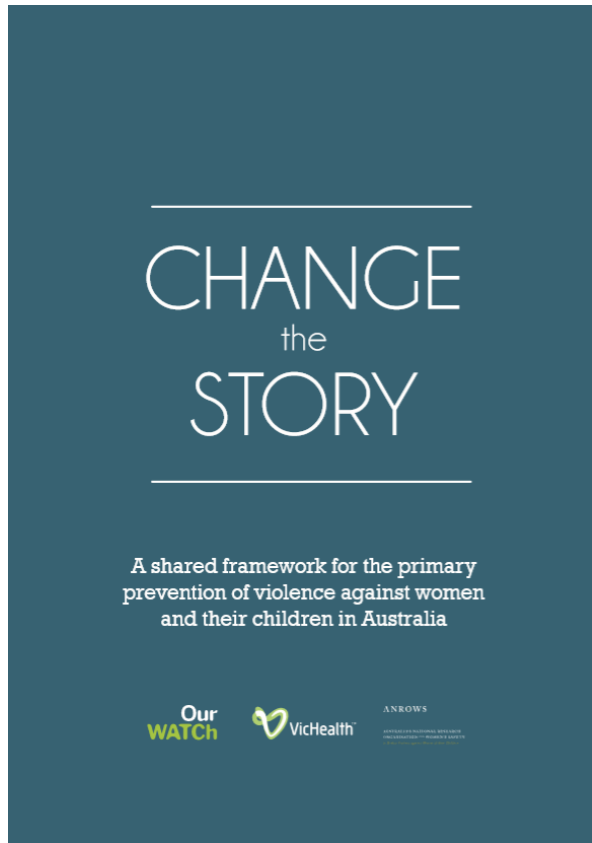
CHALLENGE
condoning of
violence against
women

PROMOTE
women's
independence
& decision-making

CHALLENGE
gender
stereotypes
and roles

STRENGTHEN
positive, equal
and respectful
relationships

Promote and normalise GENDER EQUALITY in public and private life



Ourwatch.org.au

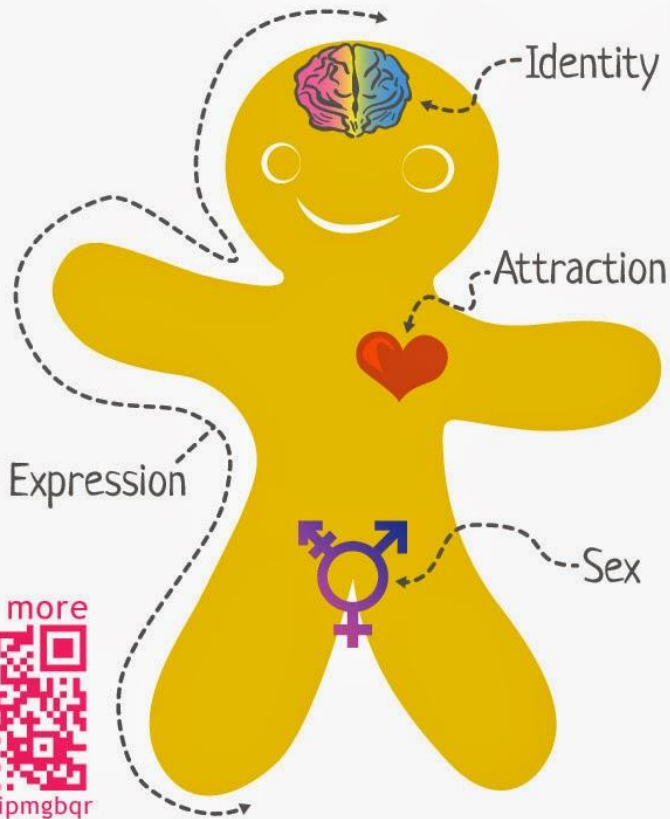
Churches and gender



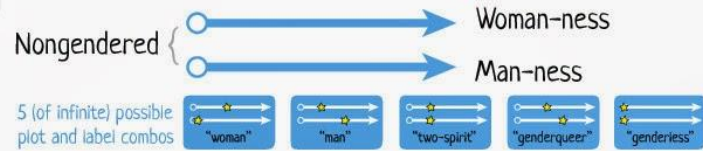
The Genderbread Person v2.0

by its pronounced METROsexual.com

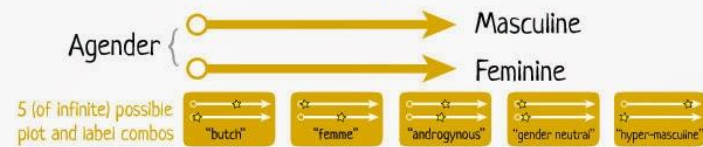
Gender is one of those things everyone thinks they understand, but most people don't. Like *Inception*. Gender isn't binary. It's not either/or. In many cases it's both/and. A bit of this, a dash of that. This tasty little guide is meant to be an appetizer for understanding. It's okay if you're hungry for more.



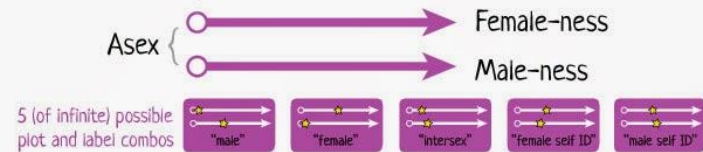
Gender Identity



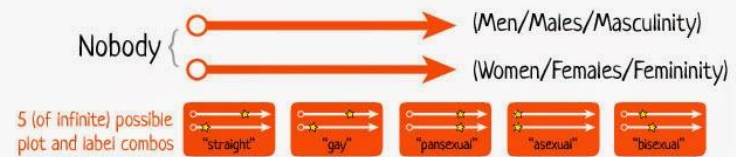
Gender Expression



Biological Sex



Attracted to



read more

bit.ly/ipmgbqr

Exercise

Go back to the ideas that you generated in the first exercise and decide which of the essential actions they represent (if any).

ACTIONS

that will prevent violence against women:

CHALLENGE
condoning of
violence against
women

PROMOTE
women's
independence
& decision-making

CHALLENGE
gender
stereotypes
and roles

STRENGTHEN
positive, equal
and respectful
relationships

Promote and normalise GENDER EQUALITY in public and private life

Tactics and tools for change

Bystander approaches

Social norm theory

Whole of organisation approaches

Bystander approaches

THINK PREVENT
BYSTANDER PROGRAM

PREVENTING GENDER VIOLENCE

**Rise Above The Pack
Bystander
Intervention
Workshops**



**MATE BYSTANDER
PROGRAM**

Review of bystander approaches in support of preventing violence against women

Preventing violence against women by increasing participation in respectful relationships

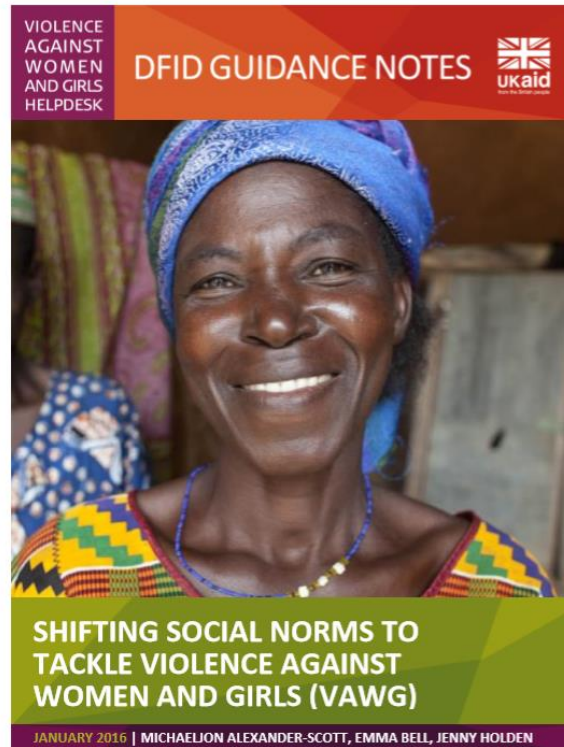
www.vichealth.vic.gov.au



vichealth.vic.org.au

Social norms





Department for International
Development U.K.

Whole of organisation



Theological themes

Concern for the marginalised and powerless

The human person – what should they ‘look’
like?

Sexuality and gender, including masculinities

Power and its abuses – including issues of
privilege and entitlement

The ubiquity of violence, including in
scripture

Summary

- Moving to focus on long term solutions (primary prevention) and systemic change
- Understanding the importance of a focus on gender inequality
- Ensuring our efforts are focused on causes not symptoms
- Framing the safety of women within a theology of the human person

Thank you

Scott.holmes@bsl.org.au

0491 690 237